

# BestDT\*

## SonicVision Processing

Run 1 : 180m - 800m (1/200)

\* A Mark of Schlumberger

Using the following logs: sonicVision

COMPANY: BEACH PETROLEUM LTD  
 WELL: PEEJAY-1  
 FIELD: WILDCAT  
 RIG: WEST TRITON  
 STATE: TASMANIA  
 COUNTRY: AUSTRALIA  
 Date Logged: 19-Nov-2008  
 Date Processed: 20-Nov-2008

Elevations: KB: 34.15m GL: -78m  
 API Number: 08ASQ0031

FOLD HERE The well name, location and borehole reference data were furnished by the customer.

All interpretations are opinions based on inferences from electrical or other measurements and we cannot, and do not guarantee the accuracy or correctness of any interpretation, and we shall not, except in the case of gross or willful negligence on our part, be liable or responsible for any loss, costs, damages or expenses incurred or sustained by anyone resulting from any interpretations made by any of our officers, agents or employees. These interpretations are also subject to Clause 4 of our General Terms and Conditions as set out in our current Price Schedule.

Field Recording:	Location:	Software Version: 13X0-101	Engineer: MARGANDA
Office Recording:	ICS Center: Melbourne	Baseline: GF 4.4 DC2	Log Analyst: A. Datey
<b>Mud and Borehole Measurements:</b>			
Rm @ Measured Temperature:	@	BHT:	Bitsize: 16in
Rmf @ Measured Temperature:	@	Type Fluid in Hole:	SEA WATER
Rmc @ Measured Temperature:	@	Mud Density: 1.04249g/cm3	

Remarks:

sonicVision 9 run in hole drilled with 16" bit.  
 Gamma Ray if from Powerpulse and only available in Real Time and not in memory mode.  
 Gamma Ray presented and in LAS file is interpolated.  
 Realible compressional data could not be processed shallower than 340m  
 See bottom of the QC log for processing parameters.

ITT PIPS - Small : 1ms ; Large : 10ms

MD  
1 : 200  
m

PIP

0 ( ) 5

Gamma Ray

0 (gAPI) 150

Compressional Delta-T (DTCO)

40 (us/ft) 240

ITT PIP

185

190

195

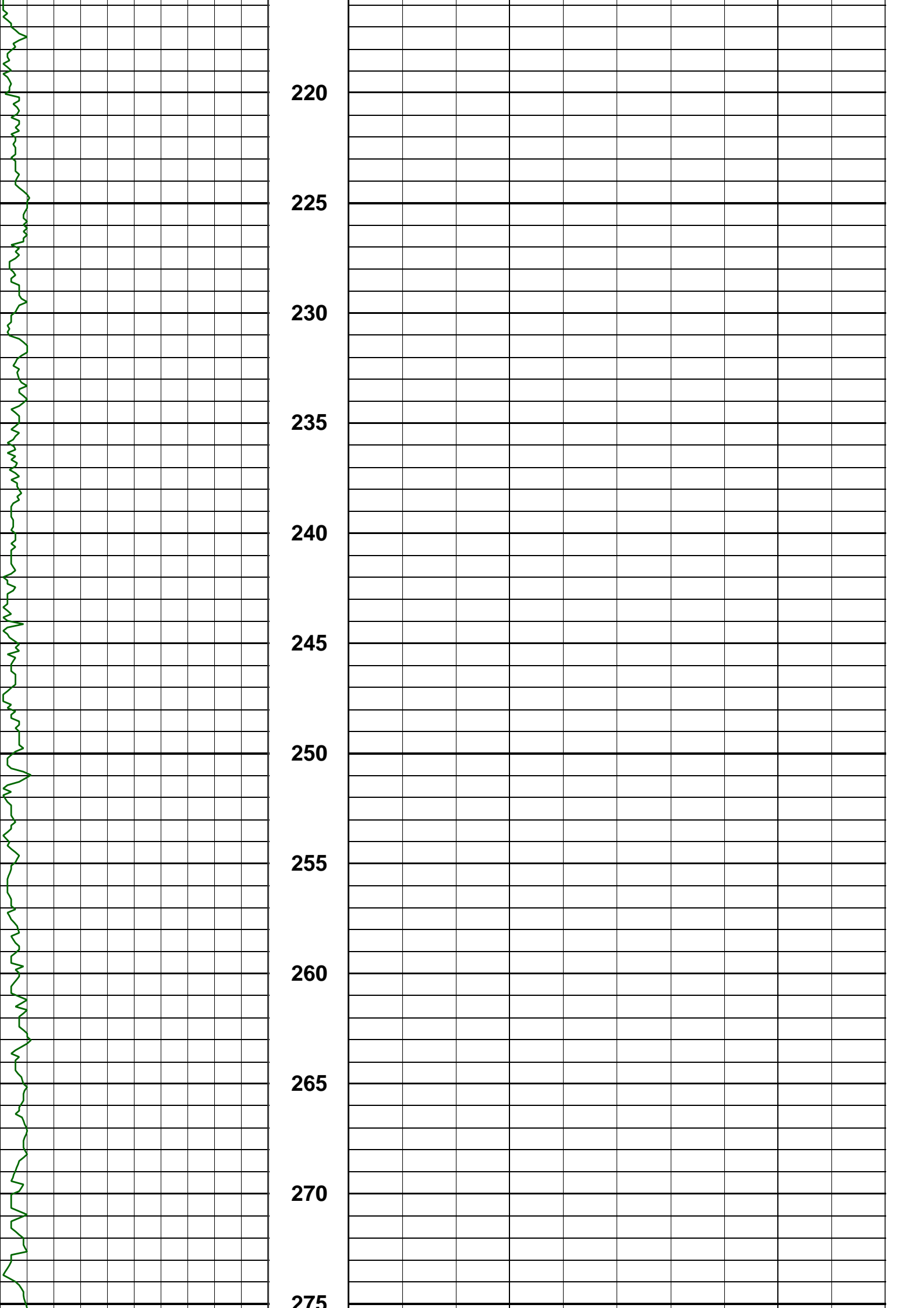
200

205

210

215





220

225

230

235

240

245

250

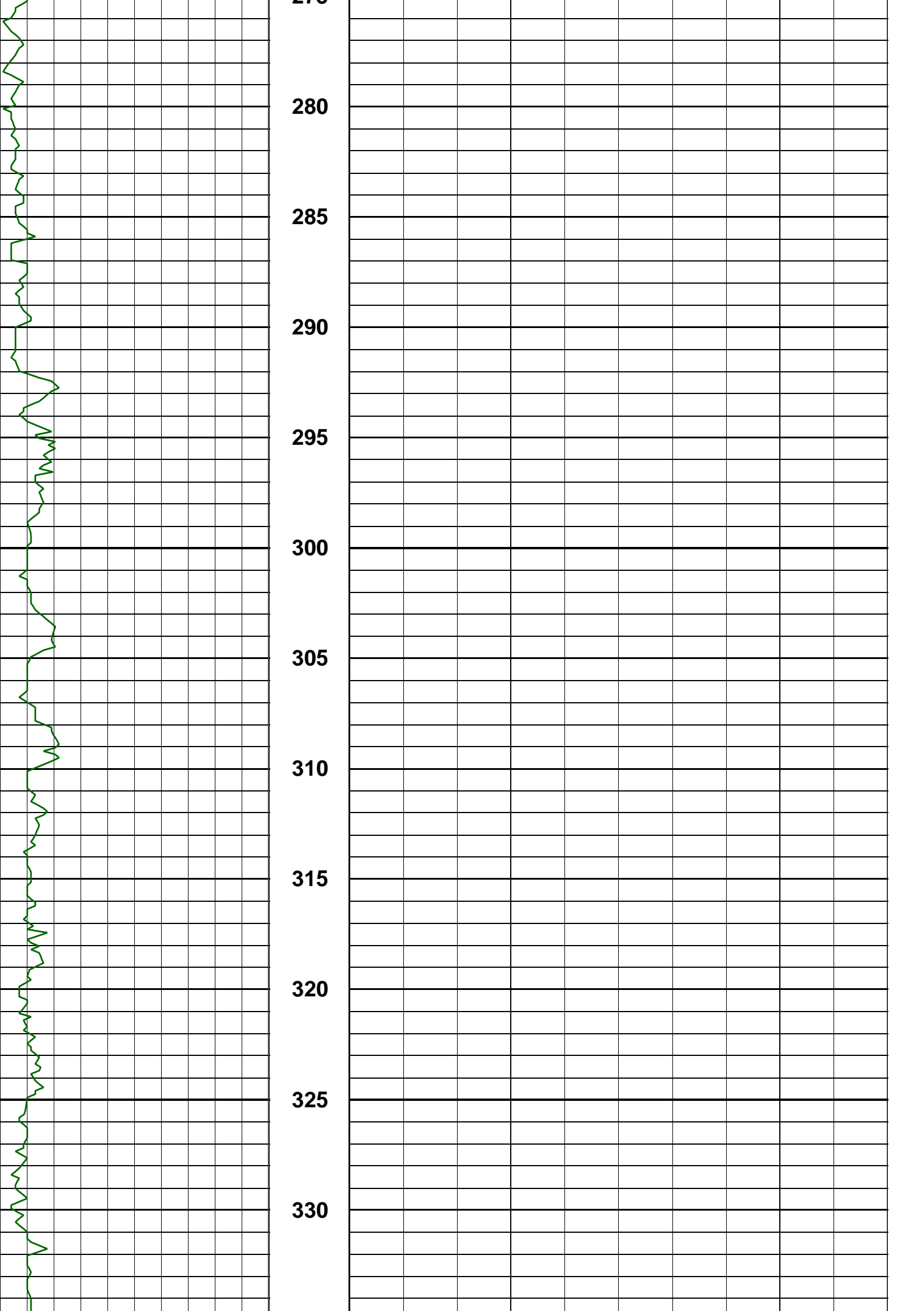
255

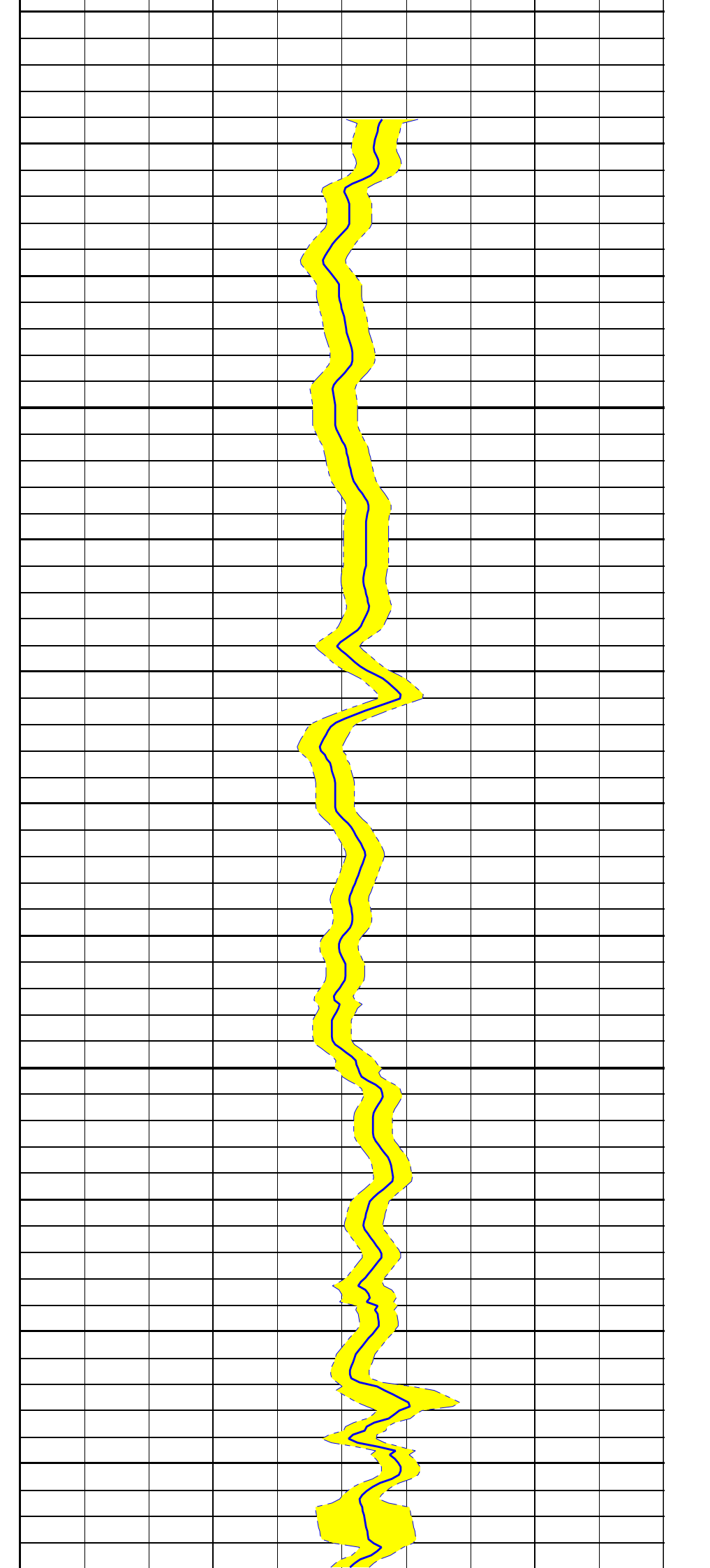
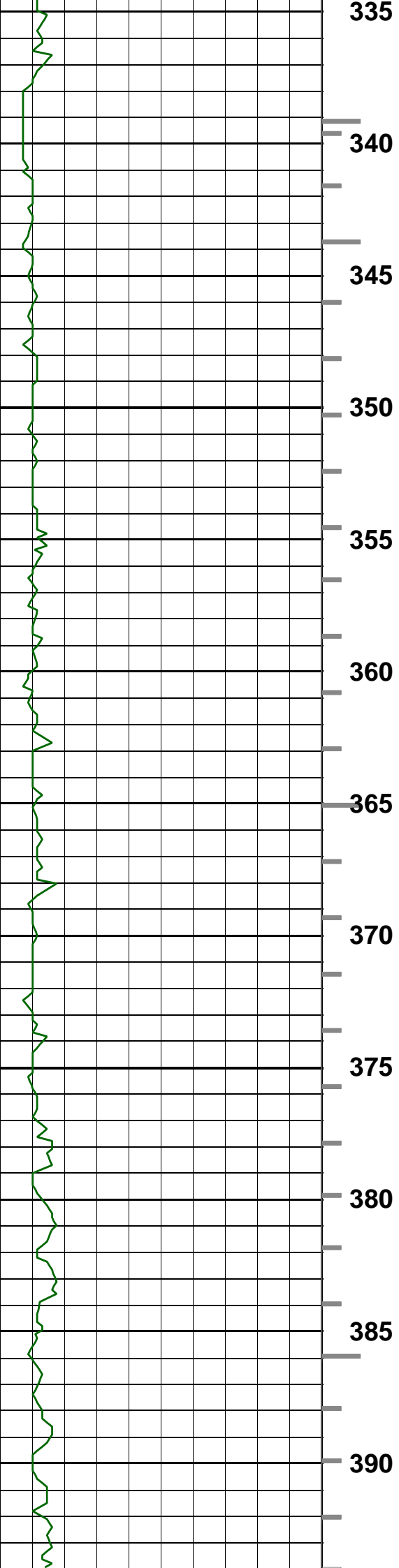
260

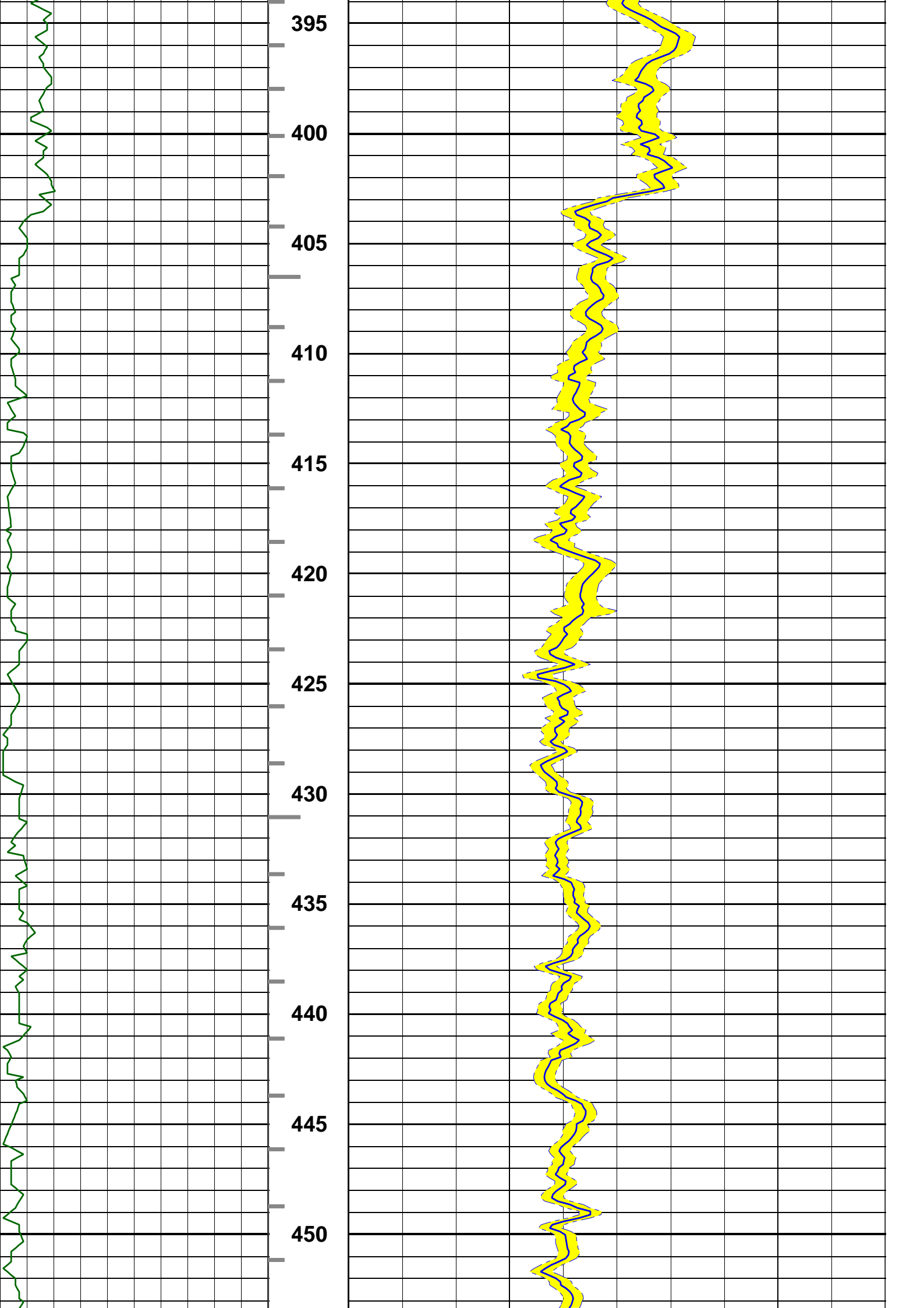
265

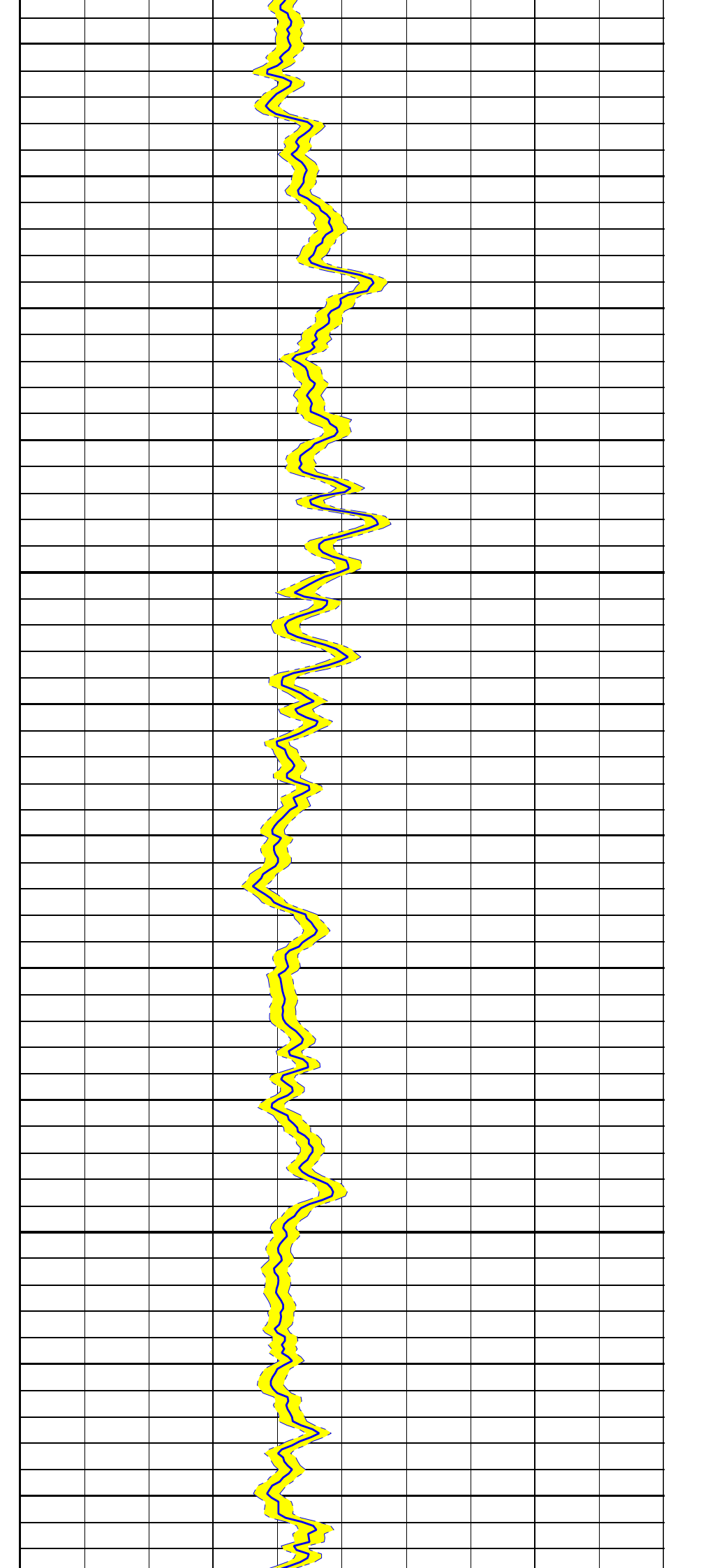
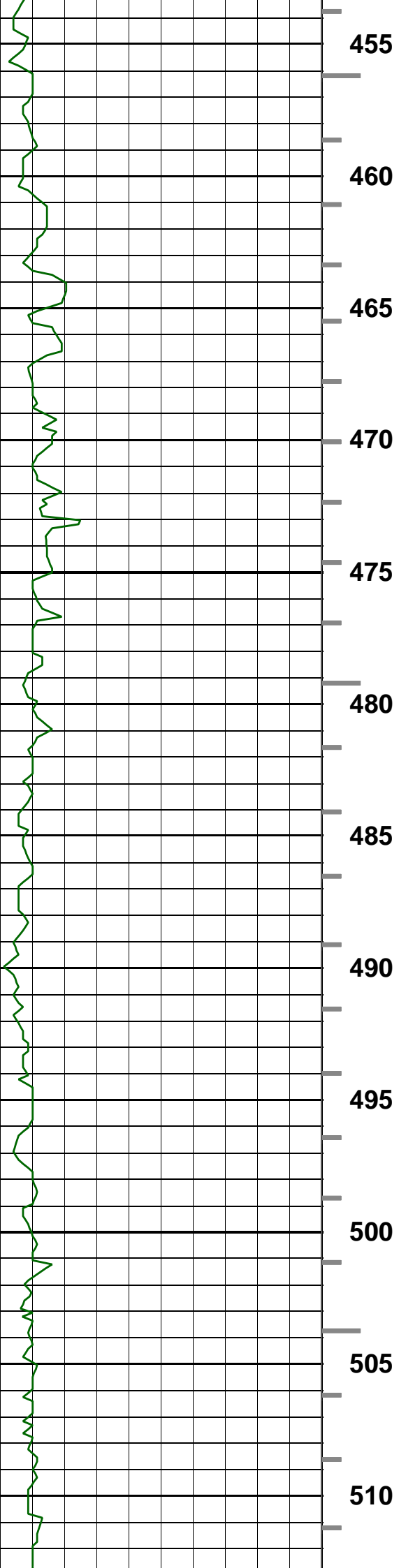
270

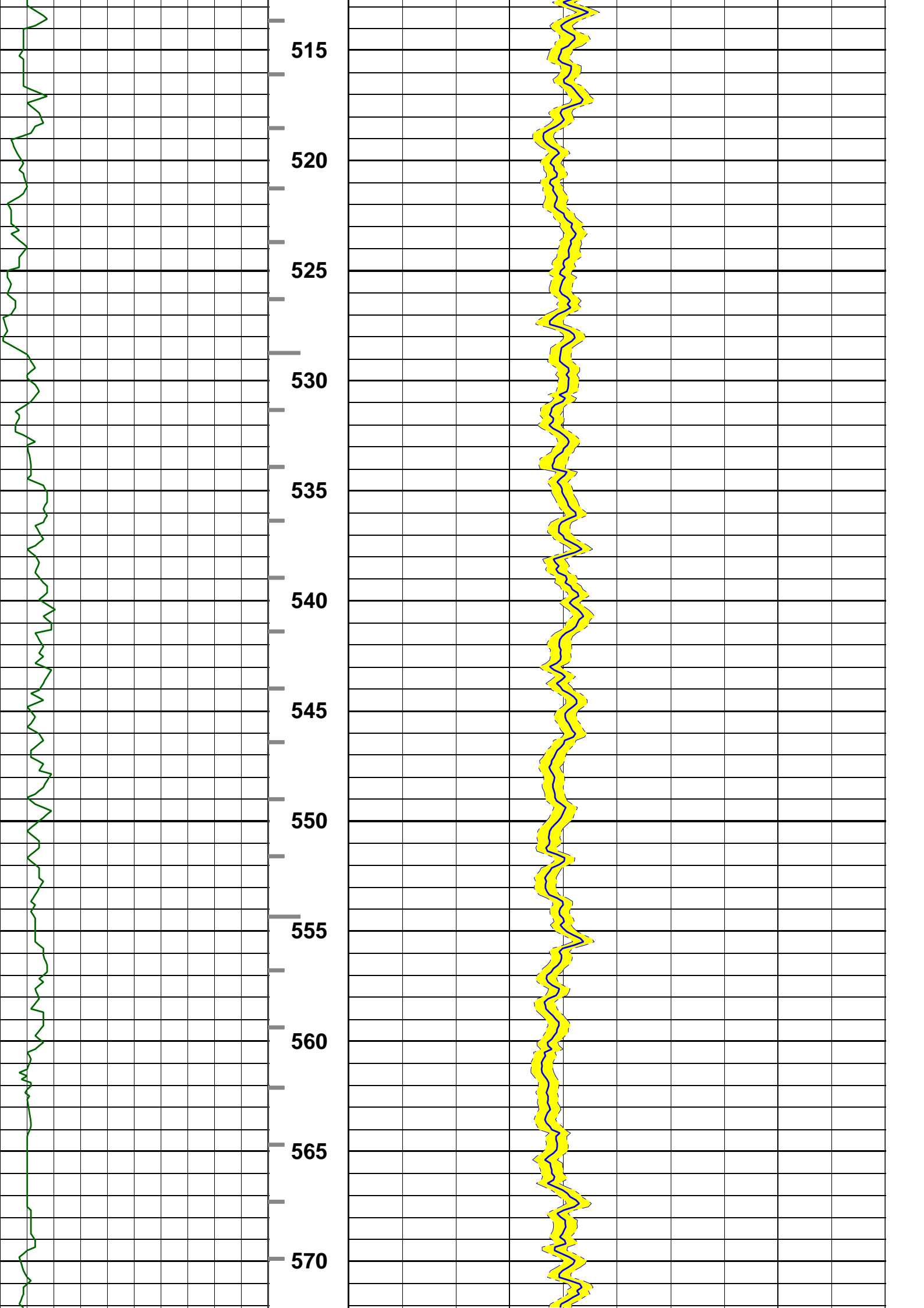
275



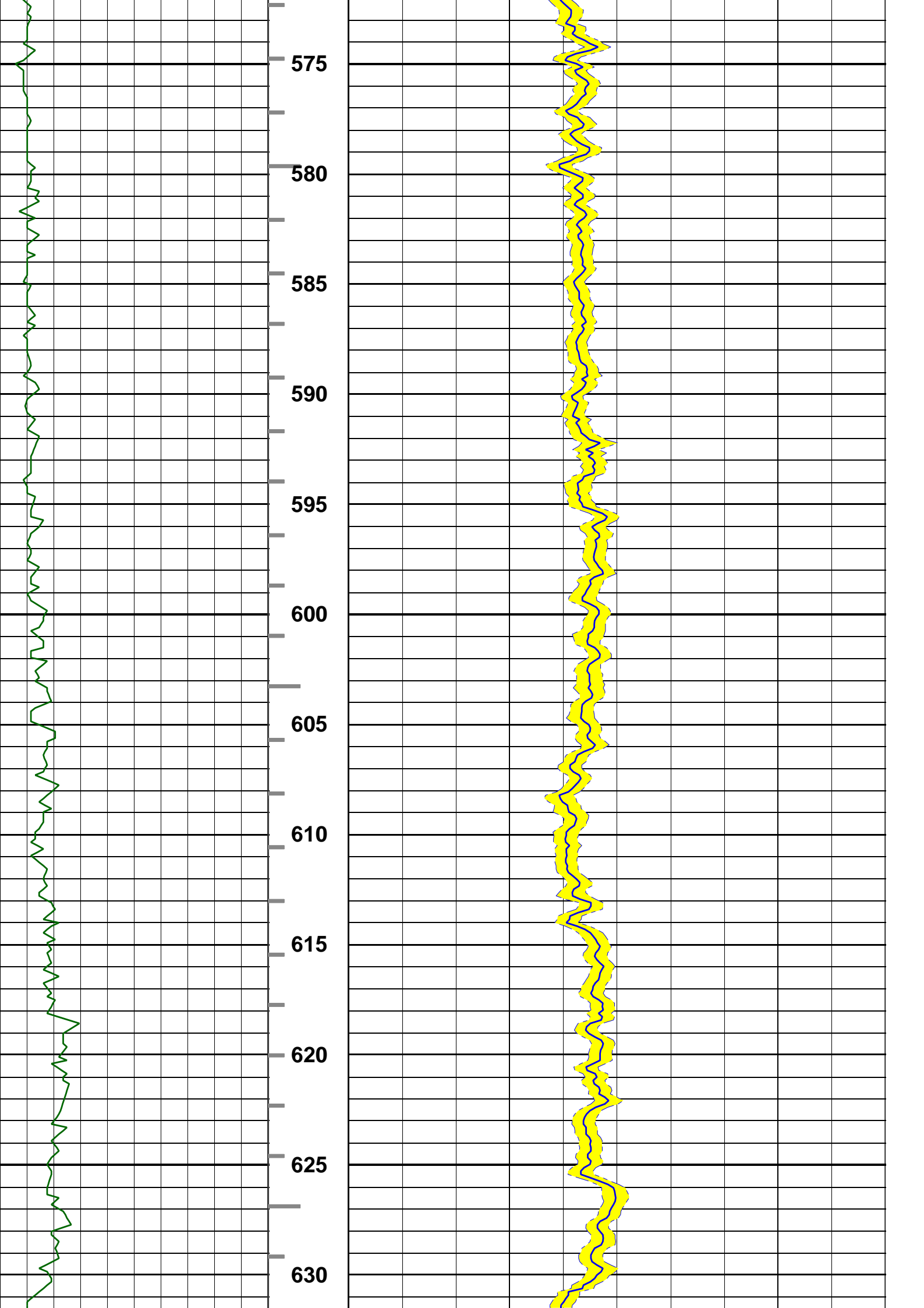


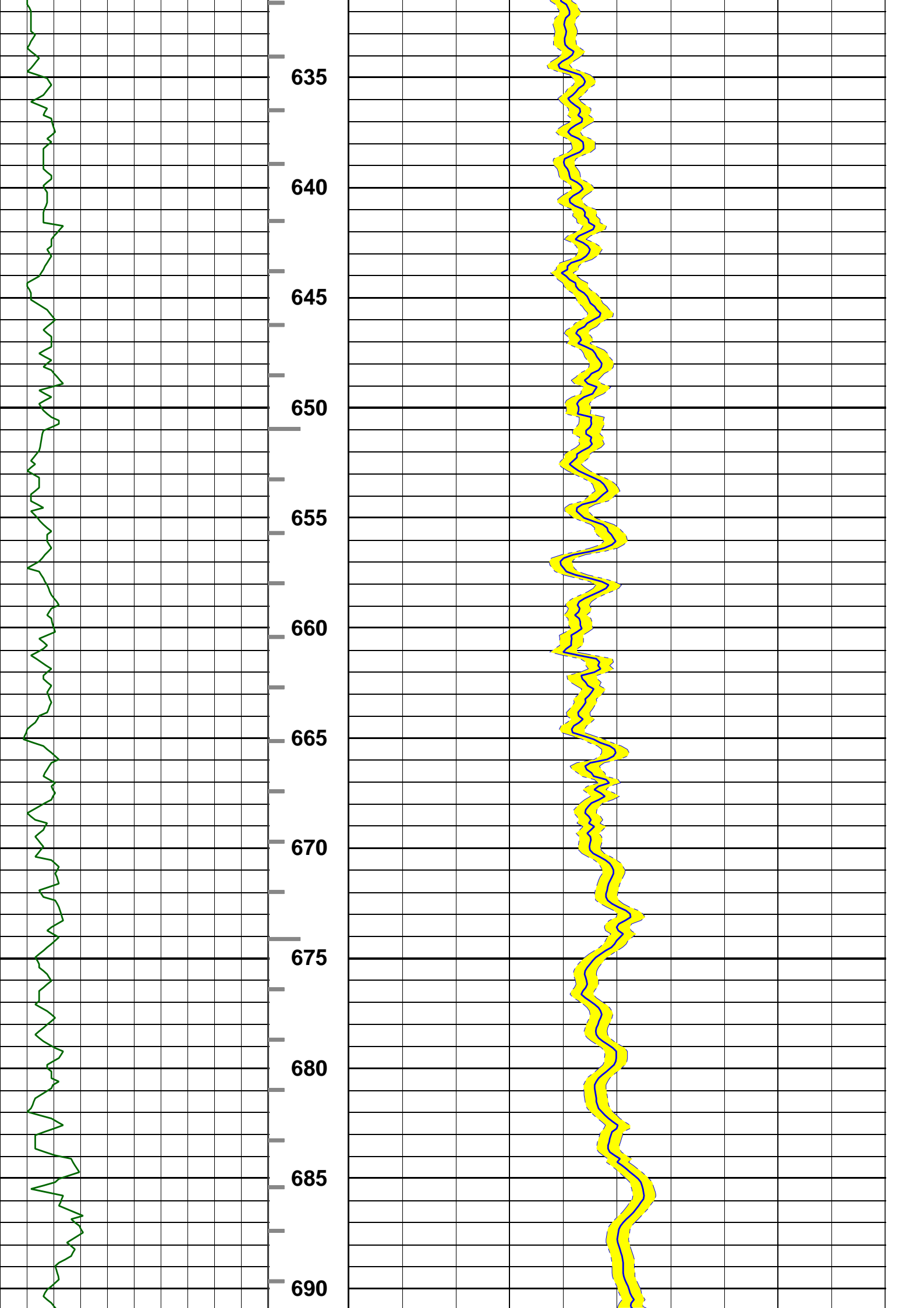


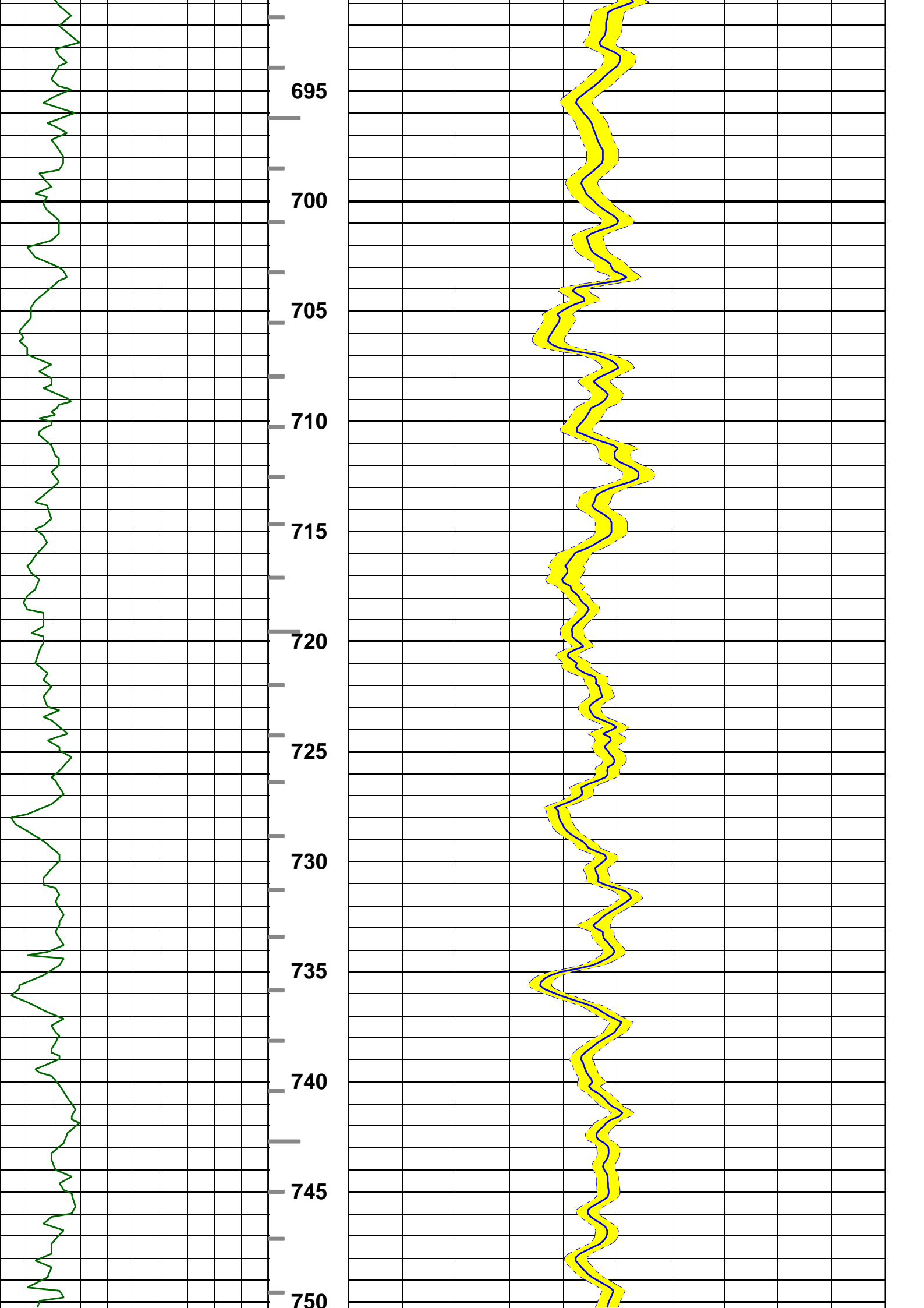


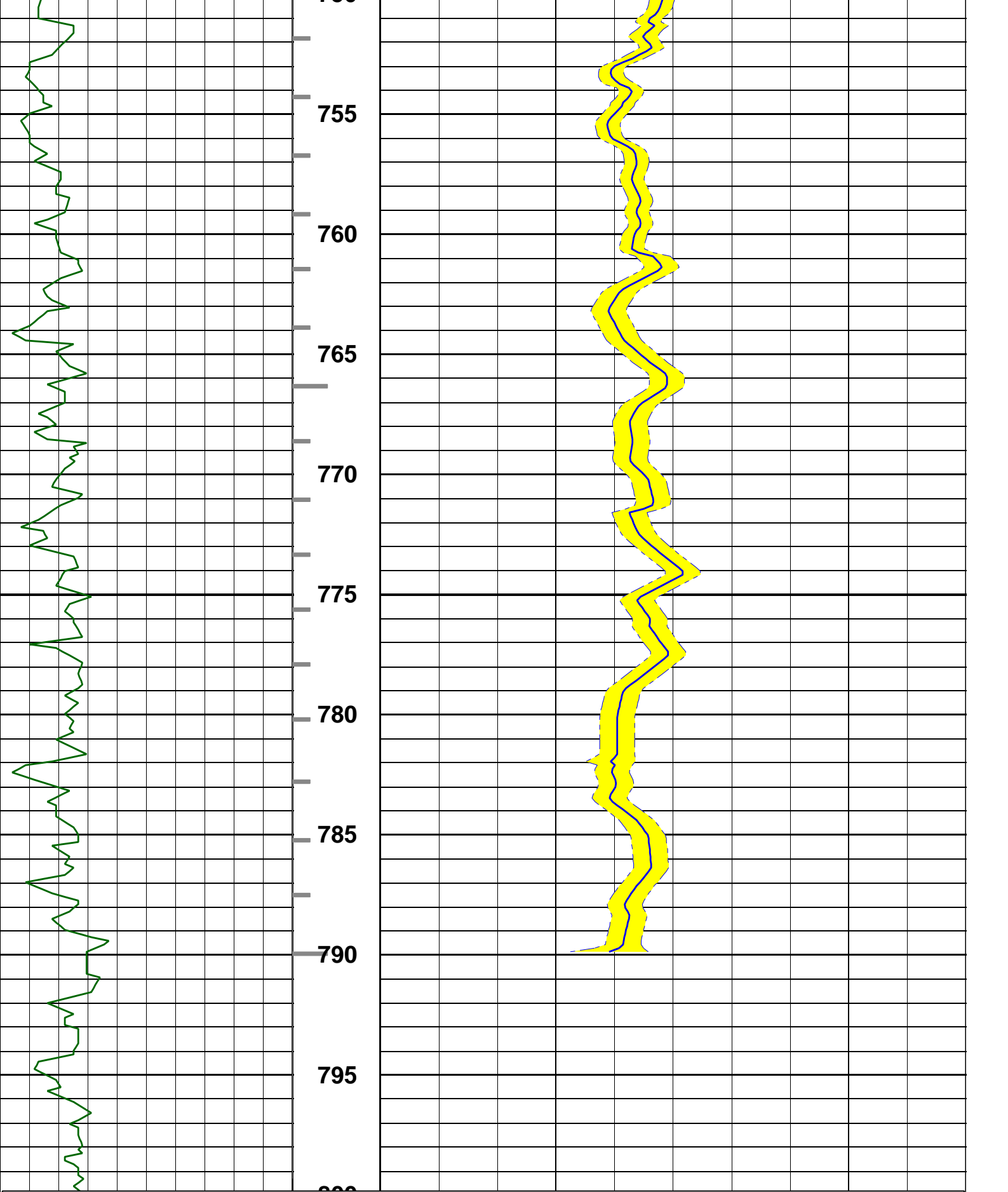






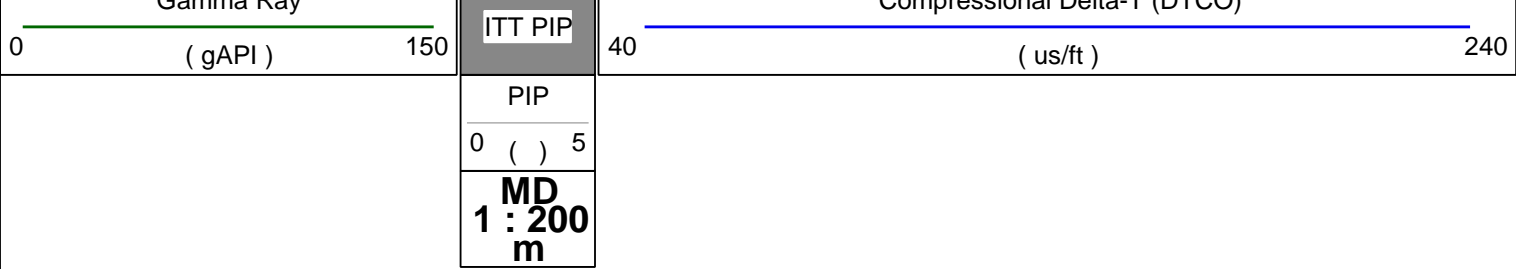




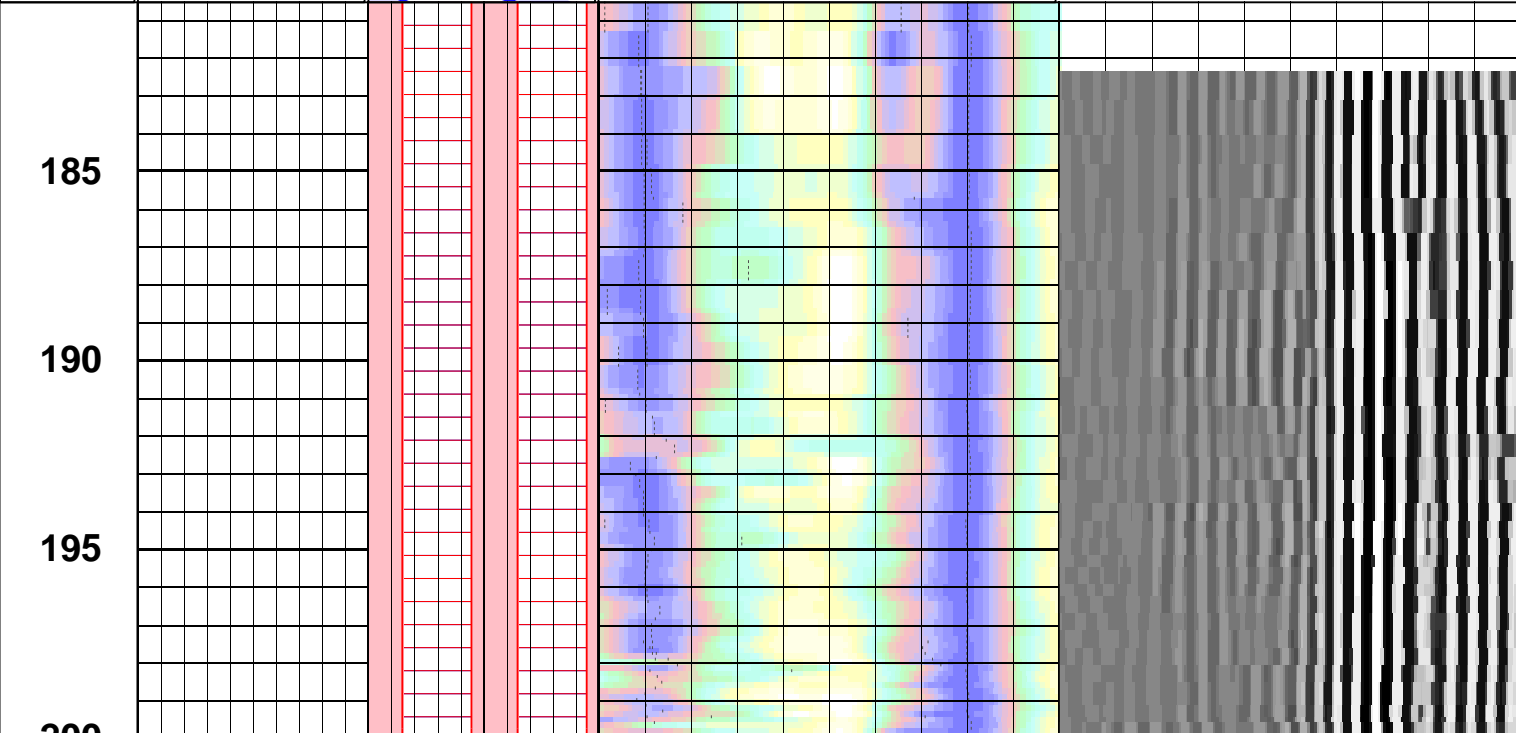
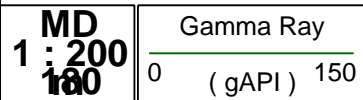
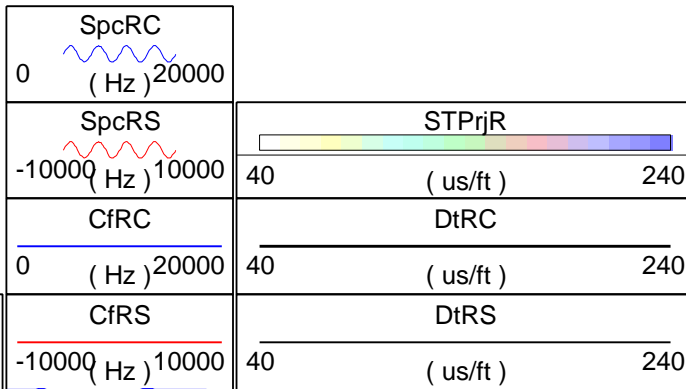
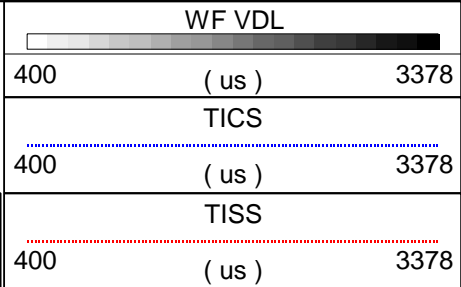


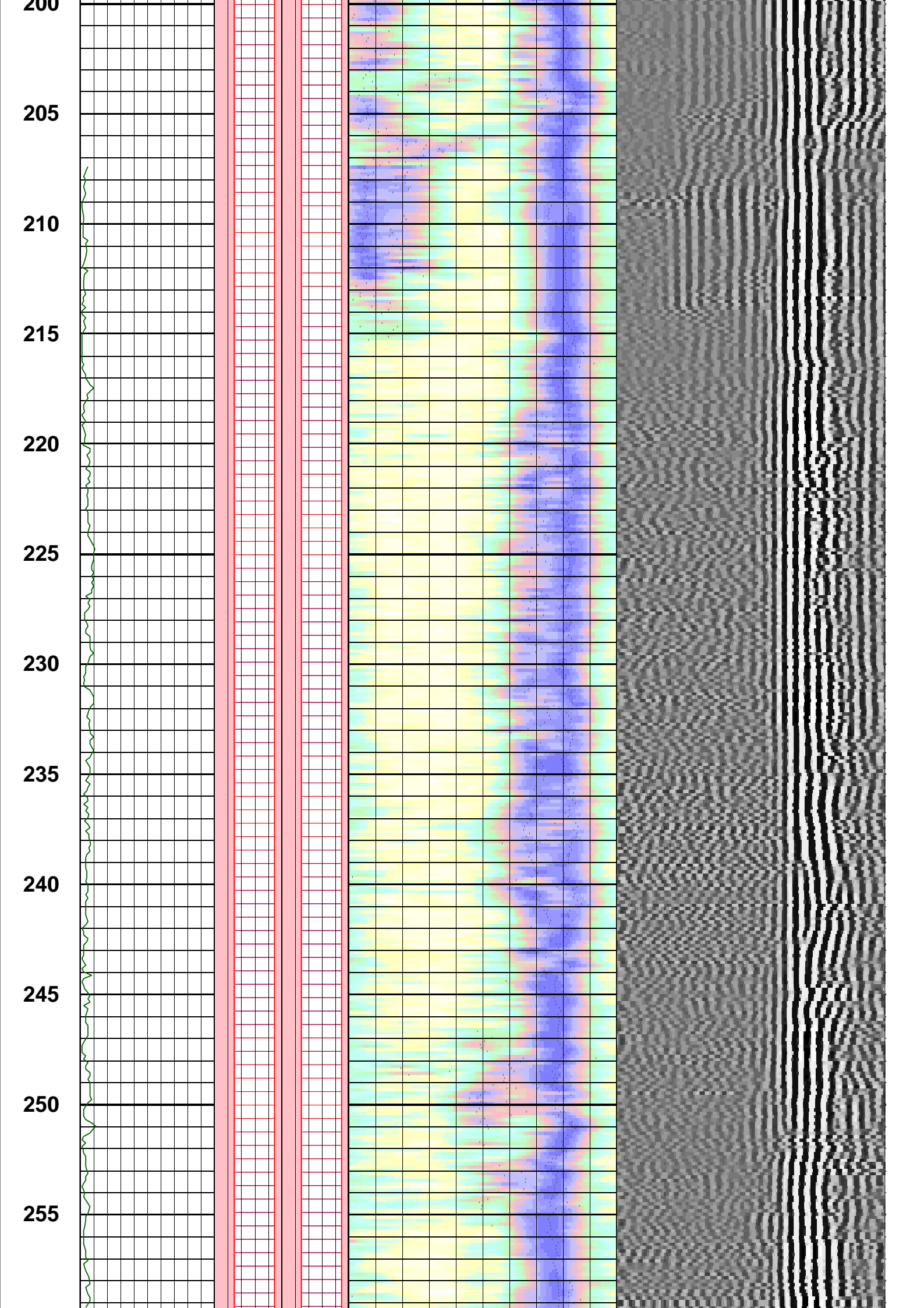
--- Finalization Result ---

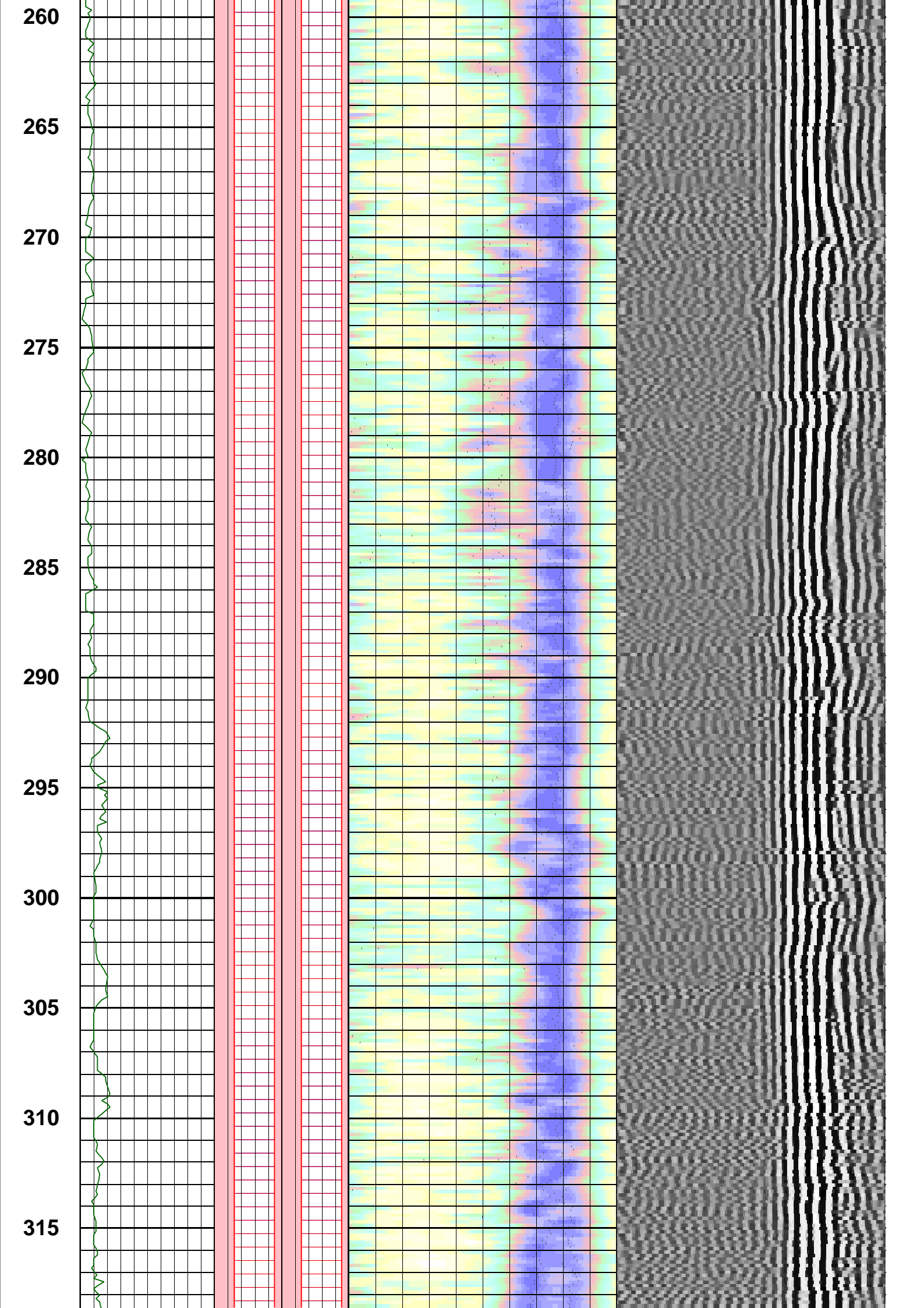
- 1 MPS Compressional Receiver Absent levels= 1082
- 1 MPS Compressional Transmitter Absent levels= 2022
- 1 MPS Shear Receiver Absent levels= 4041
- 1 MPS Shear Transmitter Absent levels= 4037
  
- 1 MPS Compressional DDBHC Absent levels= 1101 \*Selected\*
- 1 MPS Shear DDBHC Absent levels= 4061 \*Selected\*



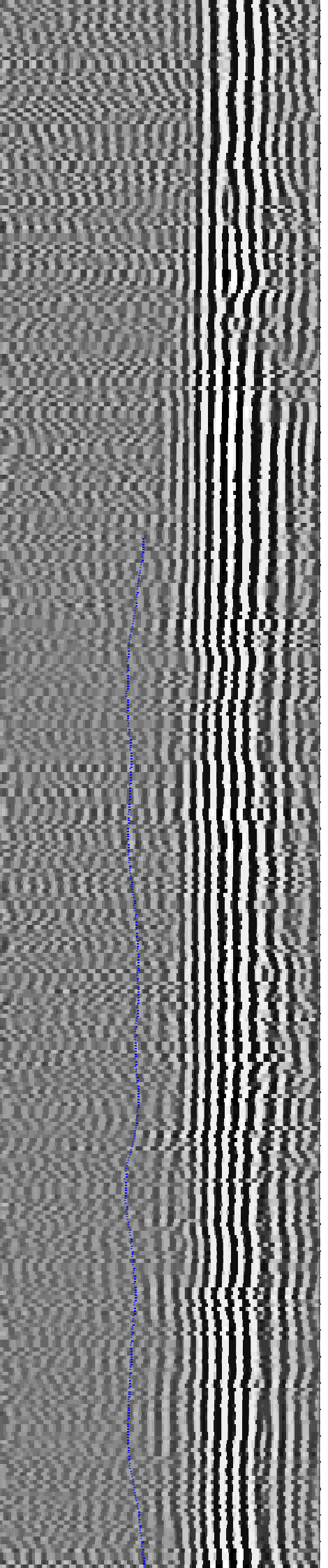
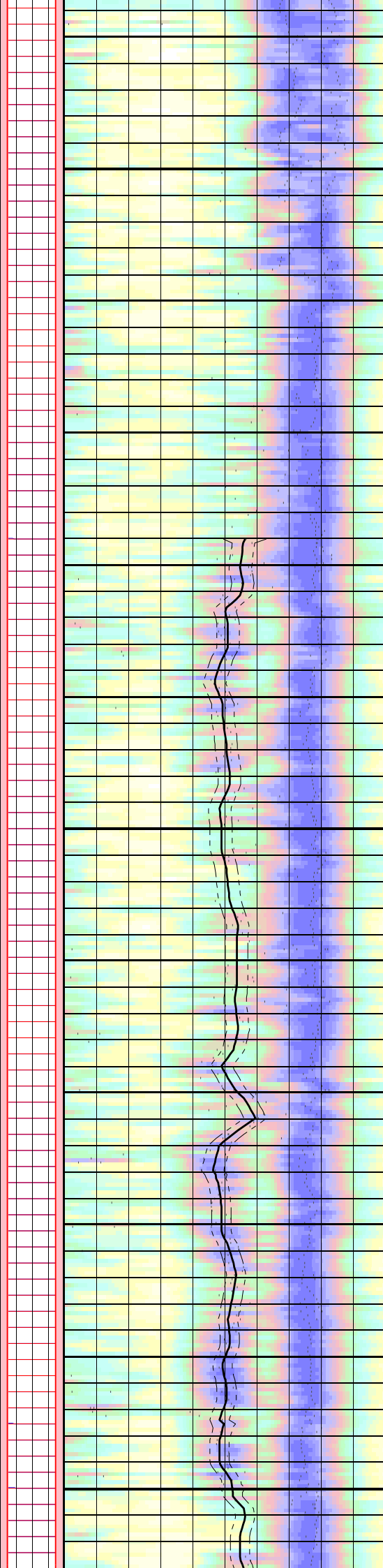
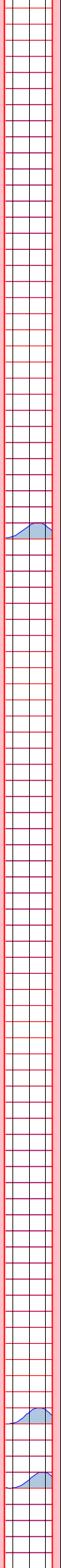
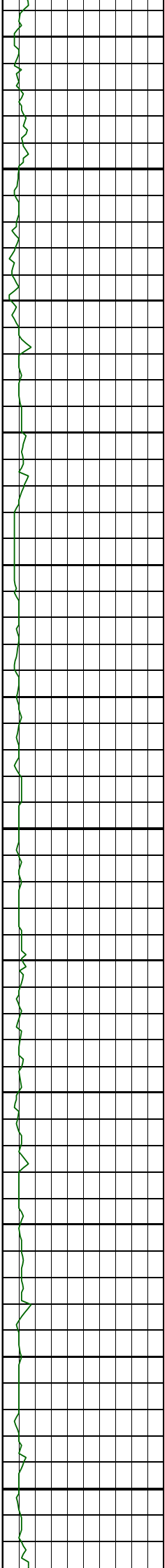
**Monopole Compressional Processing QC**





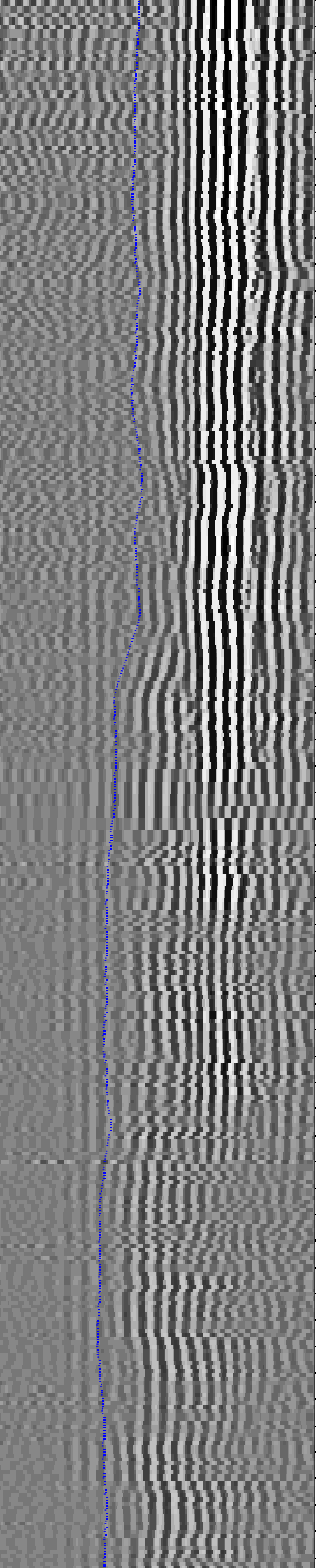
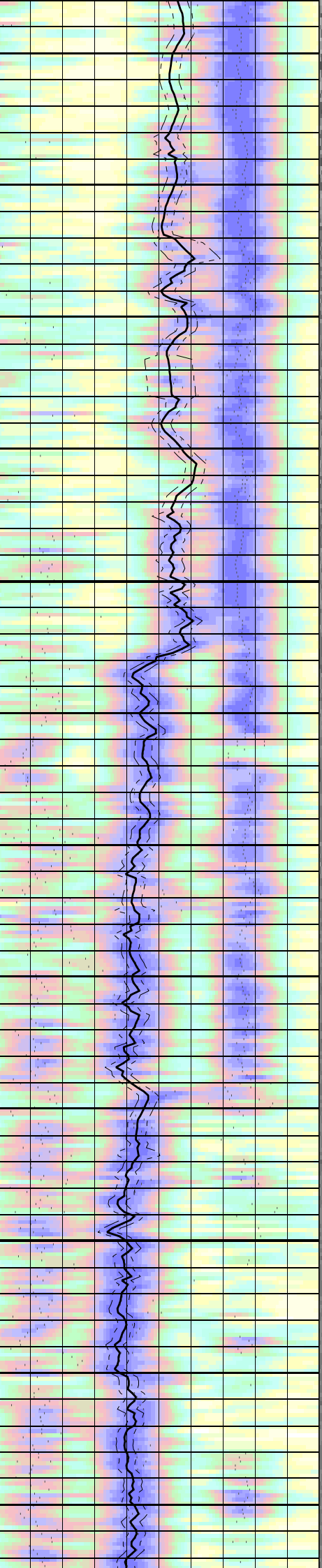
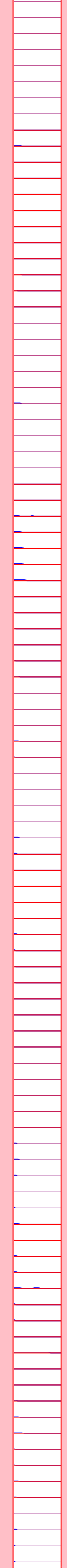
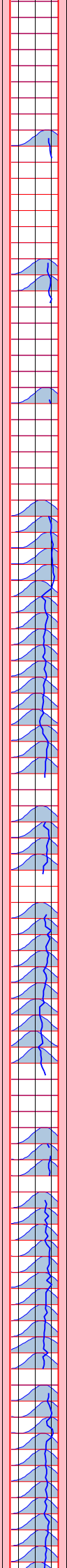
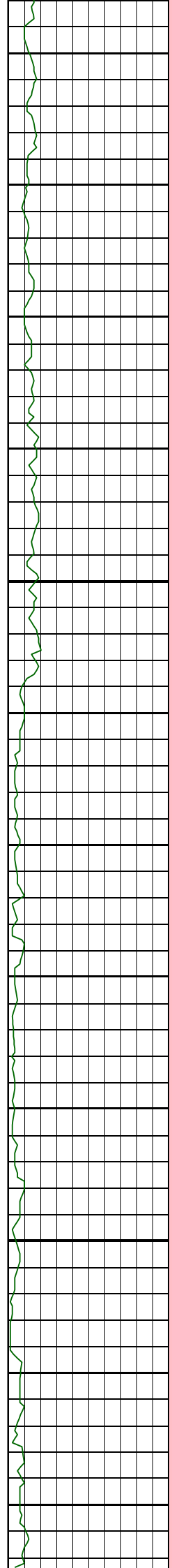


320  
325  
330  
335  
340  
345  
350  
355  
360  
365  
370  
375

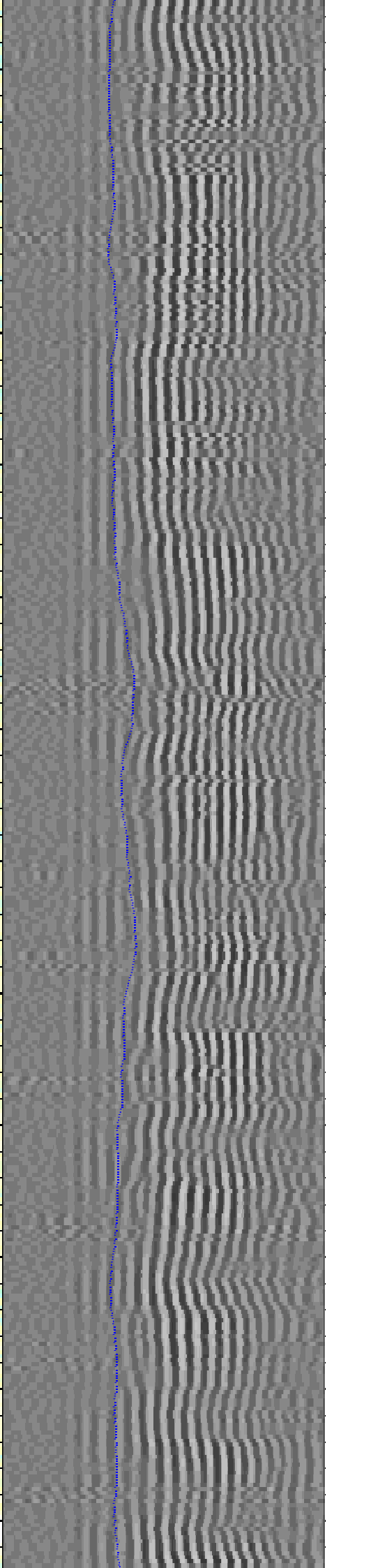
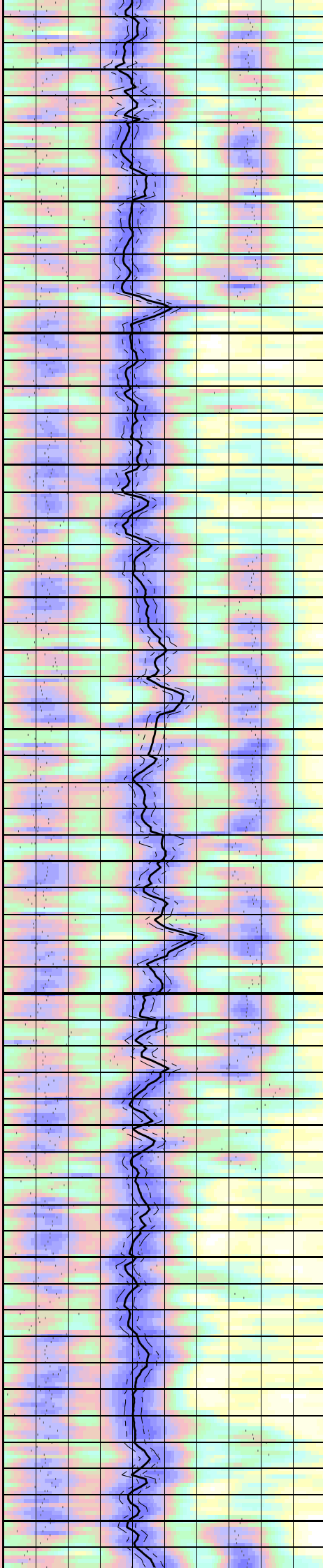
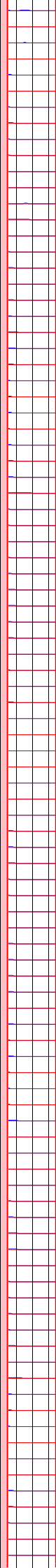
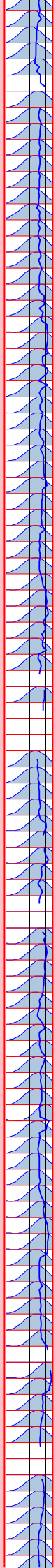
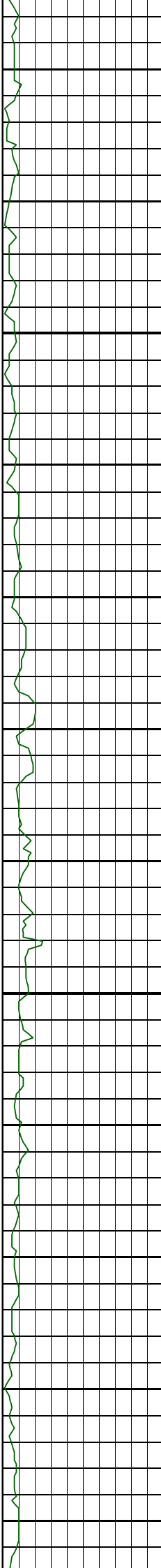




380  
385  
390  
395  
400  
405  
410  
415  
420  
425  
430  
435



440  
445  
450  
455  
460  
465  
470  
475  
480  
485  
490  
495



500

505

510

515

520

525

530

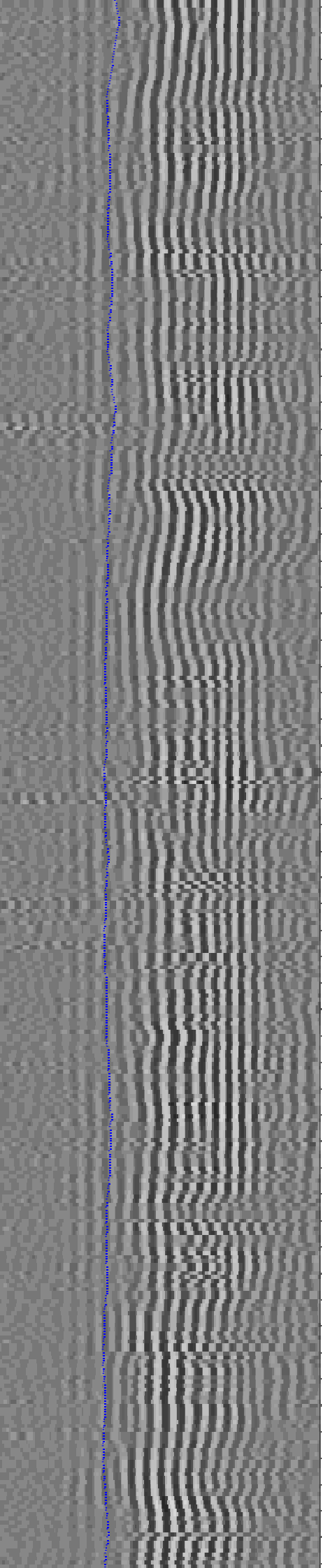
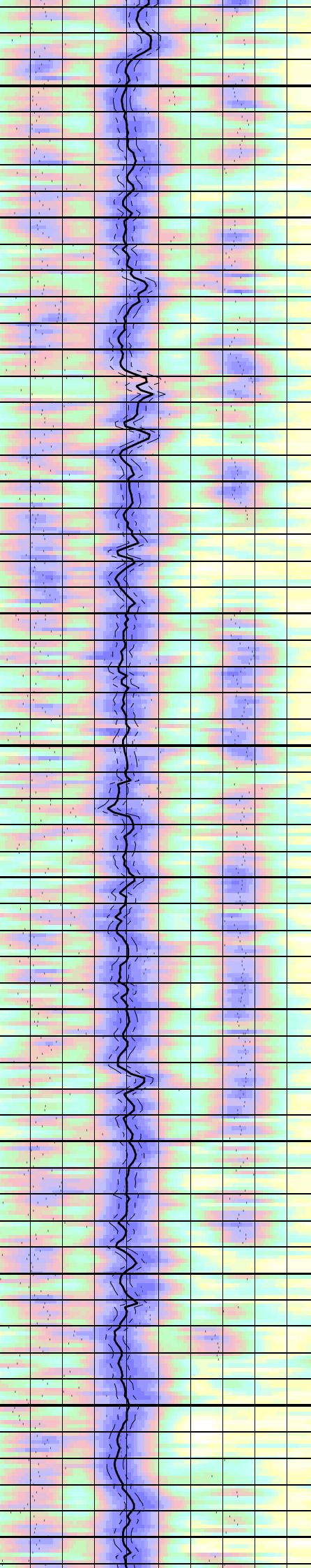
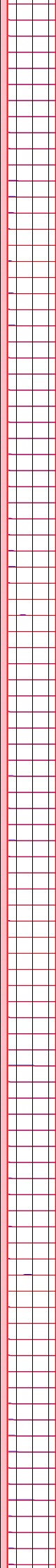
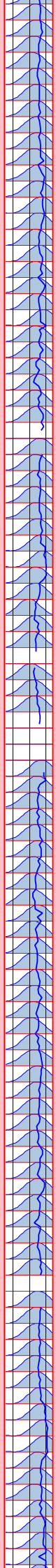
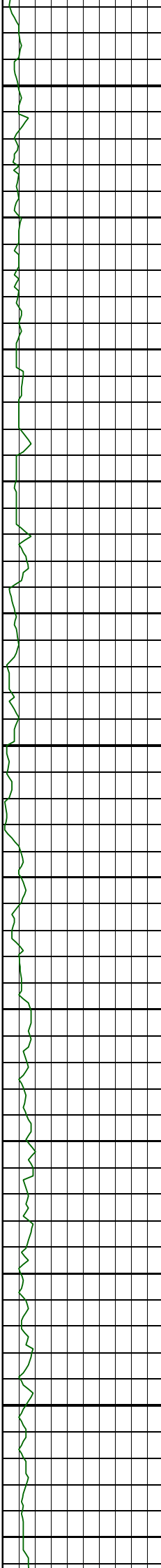
535

540

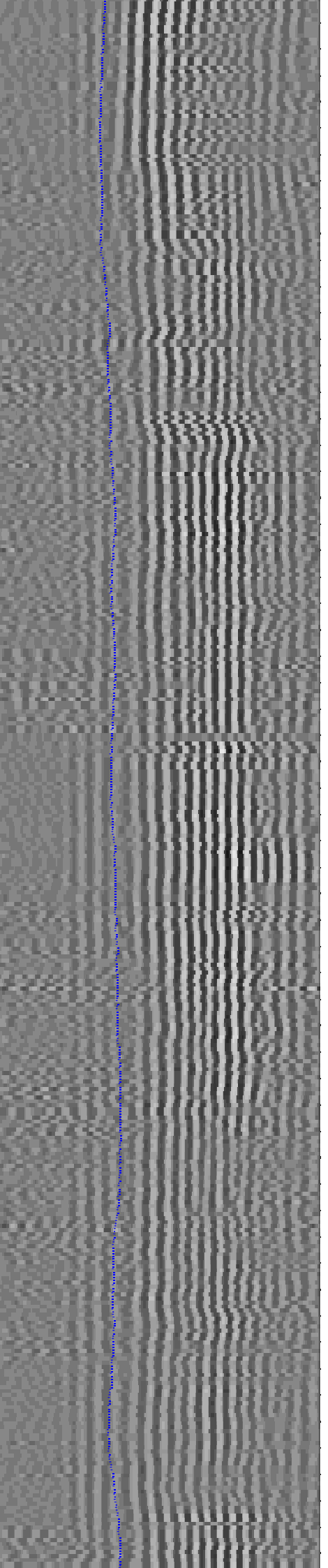
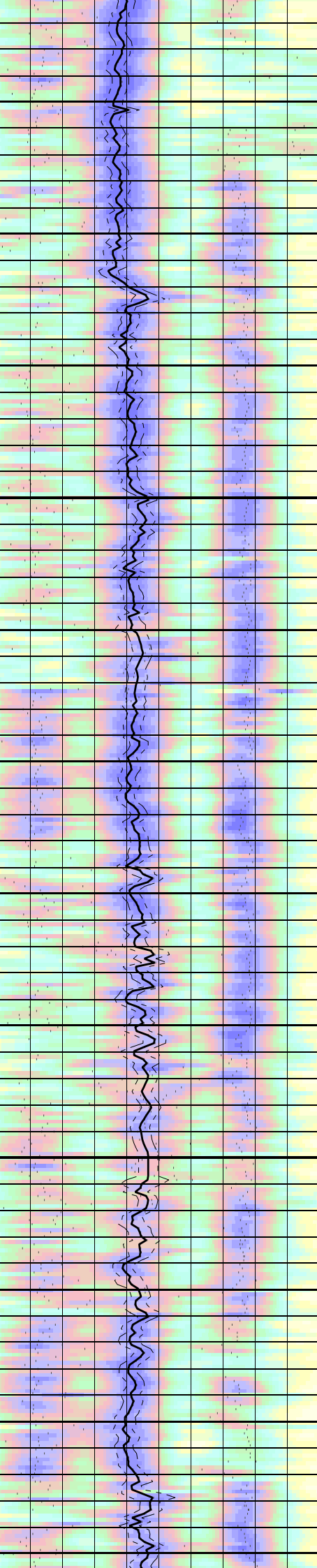
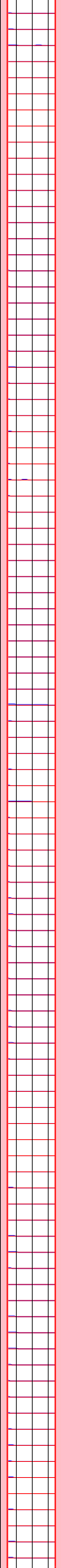
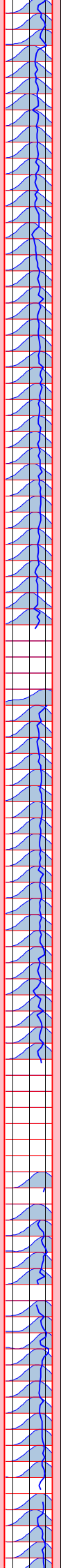
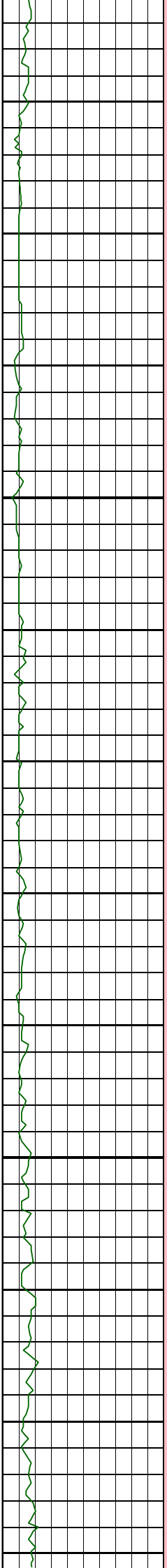
545

550

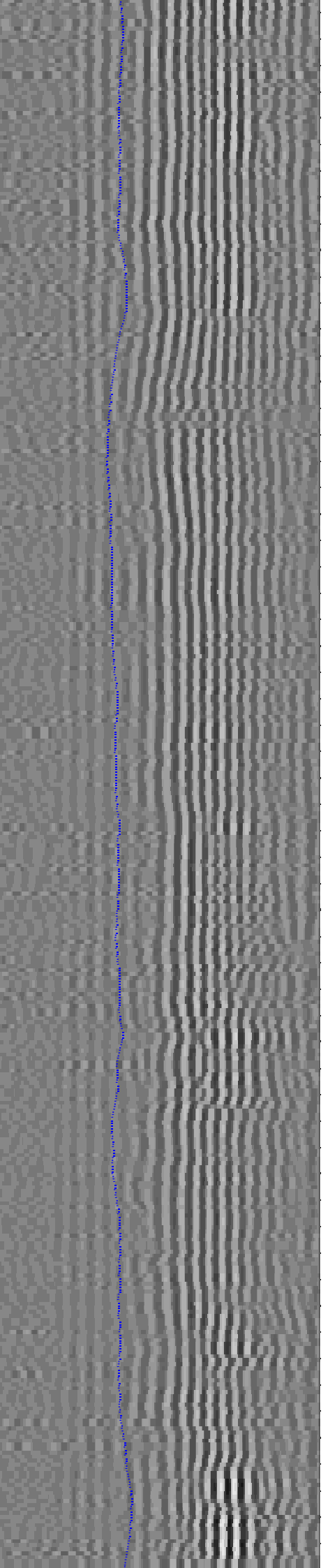
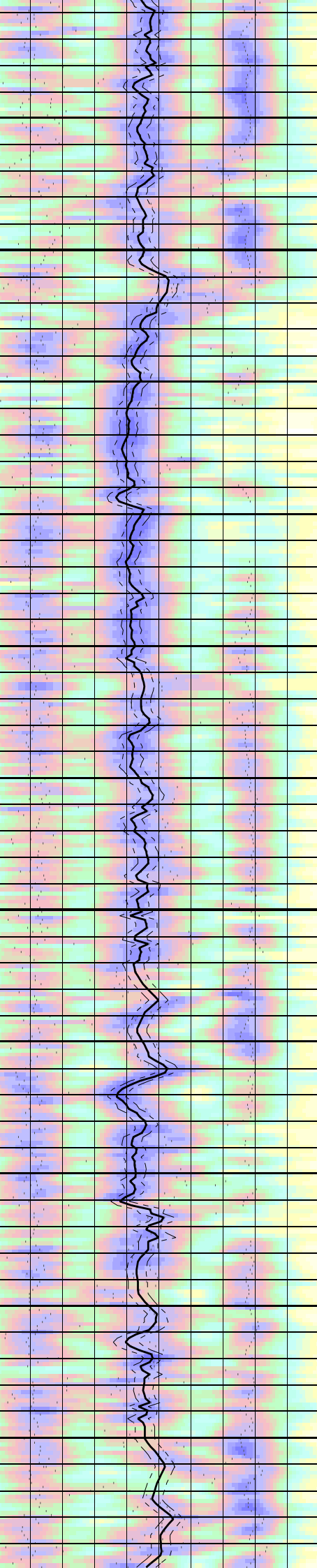
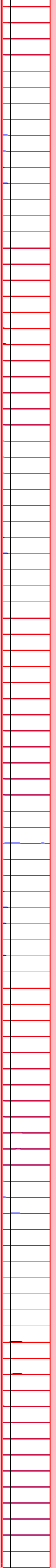
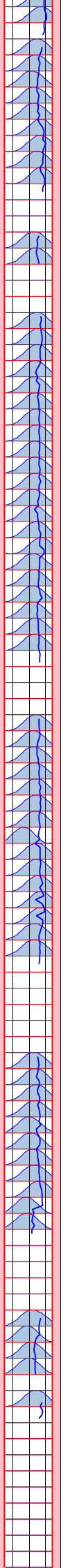
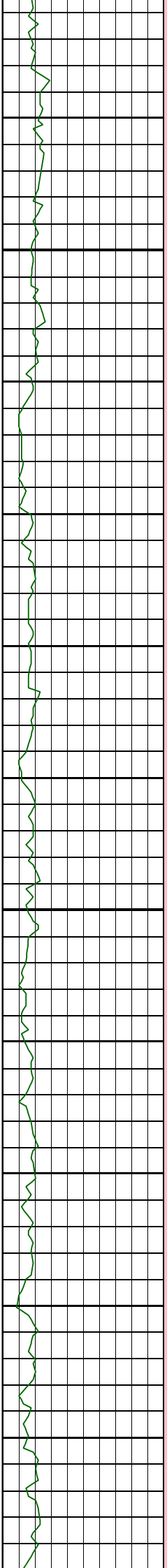
555

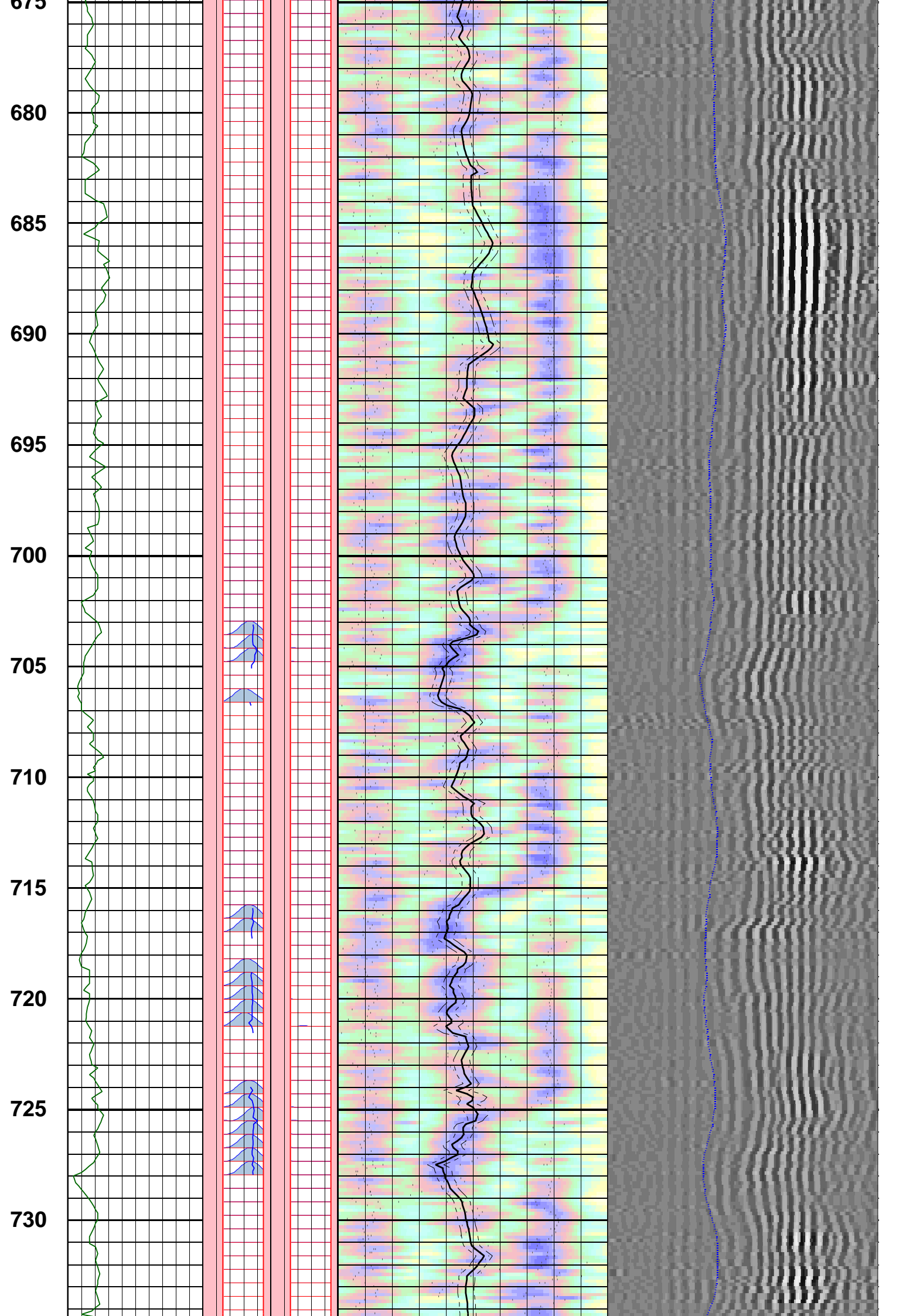


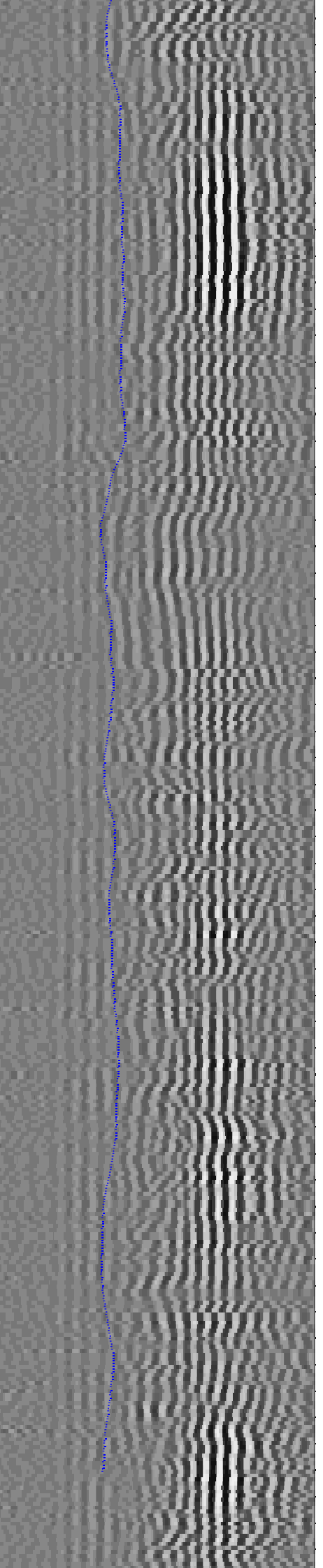
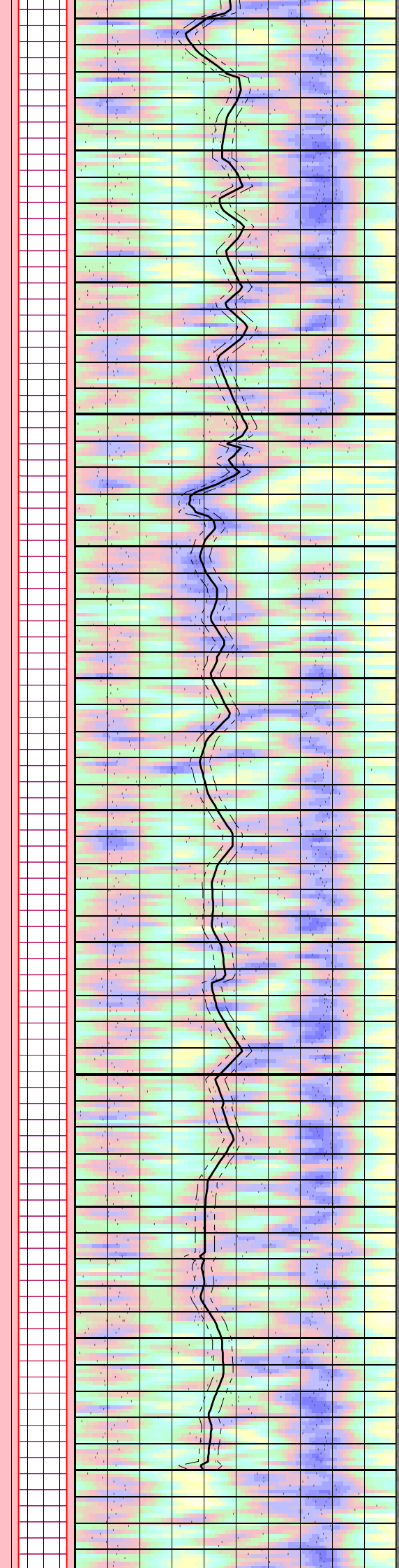
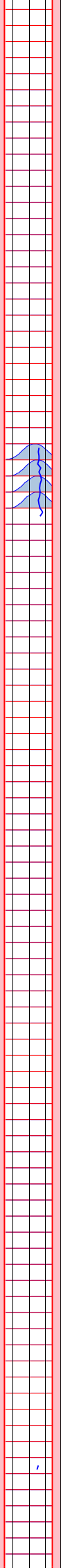
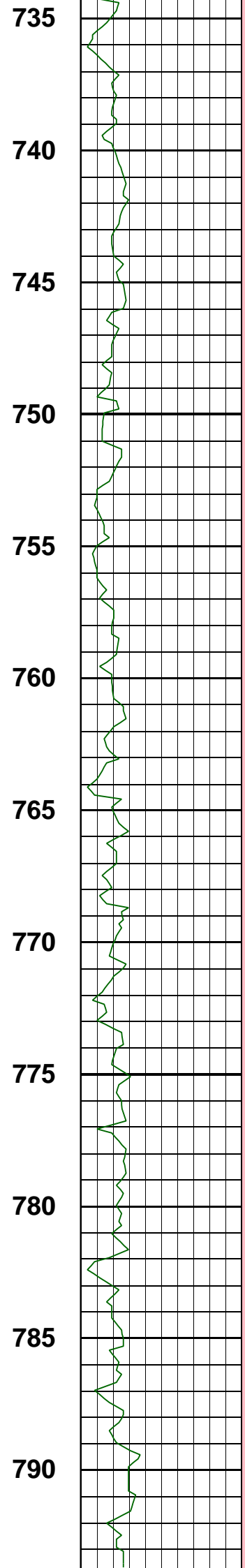
560  
565  
570  
575  
580  
585  
590  
595  
600  
605  
610  
615



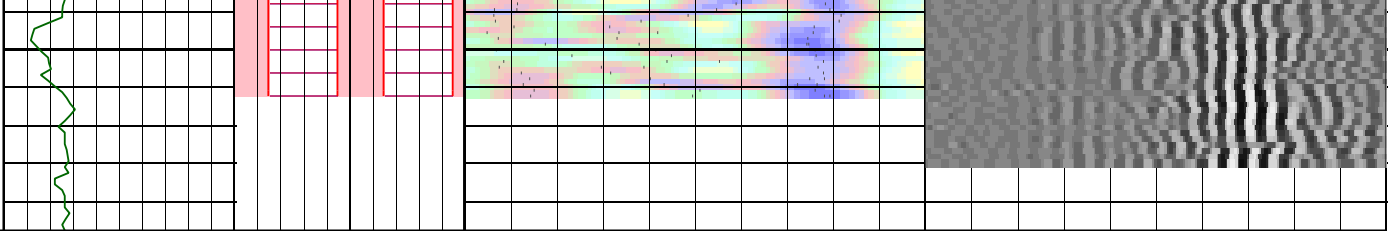
620  
625  
630  
635  
640  
645  
650  
655  
660  
665  
670  
675







795



Customized Process: Start Depth (799.295 m), Stop Depth (180.542 m), Logging Mode (sonicVISION - MPS\_WIDE)  
 Noise Cut Filtering(No), Casing Cut Filtering(No)  
 WF\_FLG(1 1 1 1), MUD\_TYPE(WBM), DTMUD(195), STCAL(Full Array)  
 TRSPAC(3.05714), RRSPAC(0 0.2032 0.4064 0.6096)  
 Hole Diameter (no input)  
 Zoning Guide (DTBC@LWD\_035SDP;1 (180.442 - 796.29 m))  
 Tracking Guide (no input)

--- Zone Top Depth (0), Zone Name (Zone1) ---

SFTY(Slow), BHS(OPEN), CSIZ(13.375), HDM(Fix\*), HD(16)  
 TWI(277.995\*), SLL(40.4227\*), SUL(240.409\*), SST(2.12751\*), TLL(400), TUL(3259.38), TST(39.7135)  
 SBW(1200\*), SBO(560\*), SWD(20), TWD(840), SEM(0.45), FLENG(49\*), FLOW(3000\*), FHIGH(9000\*)  
 TKO\_MODEL\_ORDER(2), TKO\_TOL(50) TKO\_FLOW(0), TKO\_FHIGH(12000)

<b>MD</b> <b>1 : 200</b> <b>m</b>	Gamma Ray	CfRS	DtRS	
	0 ( gAPI ) 150	-10000 ( Hz ) 10000	40 ( us/ft ) 240	
		CfRC	DtRC	
		0 ( Hz ) 20000	40 ( us/ft ) 240	
	SpcRS	STPrjR		TISS
	-10000 ( Hz ) 10000	40 ( us/ft ) 240		400 ( us ) 3378
	SpcRC			TICS
	0 ( Hz ) 20000			400 ( us ) 3378
				WF VDL
				400 ( us ) 3378

Company: BEACH PETROLEUM LTD  
 Well: PEEJAY-1  
 FIELD: WILDCAT  
 RIG: WEST TRITON  
 STATE: TASMANIA



Date Logged: 19-Nov-2008      Date Processed: 20-Nov-2008

Elevations: KB: 34.15m      GL: -78m  
 API Number: 08ASQ0031